

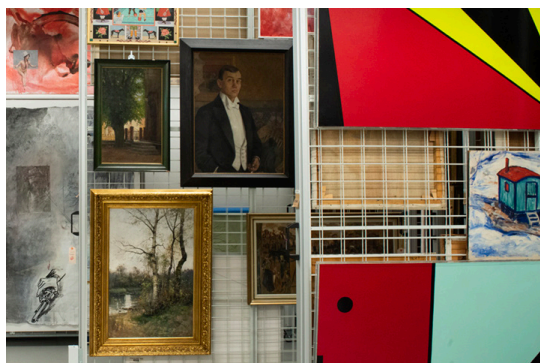
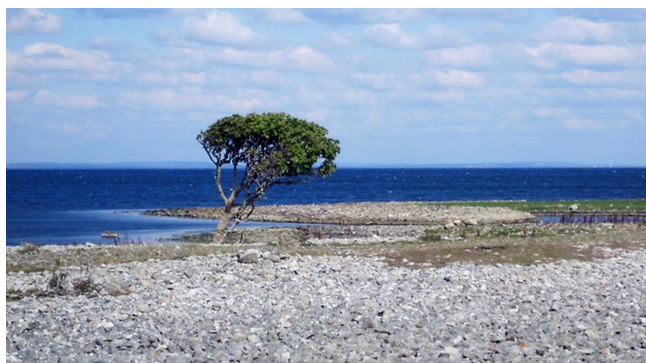
Welcome to
Morgan Owners Group
of Sweden 60th Anniversary
at Hotel Tylösand, Halmstad
22-24 maj 2026!



Exciting encounters, lovely
roads and two happy evenings
with many good Morganfriends,
old and new is...



A little sneak peek at what you can do if
you arrive before Friday's opening



Beautiful roads, picturesque alleys, the king of the forest and a Swedish “fika”! Some tips of excursions for those who check in before Friday.

THERE IS A PLETHORA of exciting places and beautiful places to visit in this part of Sweden. For this weekend we have put together some drives of varying lengths to drive in our beautiful landscape. They are all charming with opportunities for some exciting stops.

For the Thursday or Friday, alternatively Sunday, we suggest the slightly longer “Southern run” to the Bjäre peninsula, maybe a stop in Båstad or picturesque Torekov for lunch or a detour to Hovs Hallar with its spectacular rock landscape.

If you’ve never met an elk, the king of the Swedish forest, maybe a drive to Markaryds Älgpark, and an elk safari may be a fun and different experience. If you prefer to acquaint yourself with deer and mouflons, maybe eat some game, then take a drive to the beautiful Ulvereds Hjorthägn (deer enclosure).

The Friday morning will also offer the opportunity to drive in convoy to Skeppshult Bicycle factory. Departure at 09.00. Skeppshult have been manufacturing award winning bicycles for more than 100 years. On top of this, the owners are passionate Morgan owners!

In the factory we will follow the process from the first bend of a pipe and welding of the frame to the painting and final assembly, before visiting the exhibition hall to view the finished article.

Drive your own car, following our lead vehicle for as far as possible. Driving distance 75 km and driving time approximately 1 hour 10 minutes.

Note! Register your participation for the visit by 8 May to kanalvagen13@gmail.com

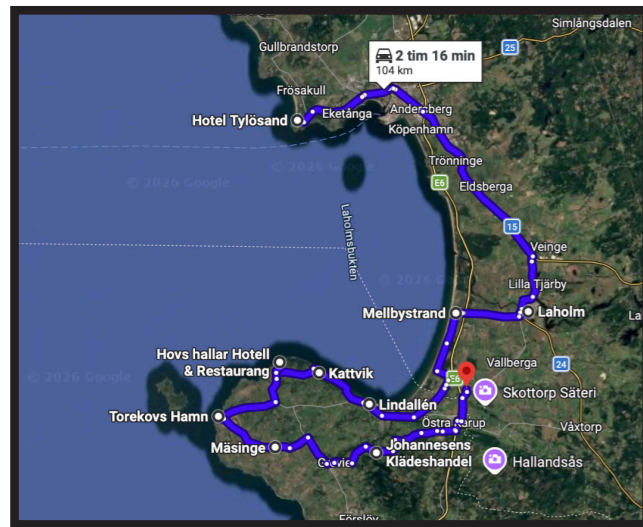
We suggest you keep the Long drive alternatively the short northern drive for Saturday as both these include a drop-in lunch at Wapnö Slott between 11.00 – 14.00. It will be magical!

Or if you prefer to acquaint yourself with Halmstad and its surroundings, please visit Halmstad tourist information, <https://www.destinationhalmstad.se/en> or why not ask for more informal equally good tips from the reception at Hotel Tylösand.

Our recommended runs:

These are described in detail in the Program & Road book you receive at check in.

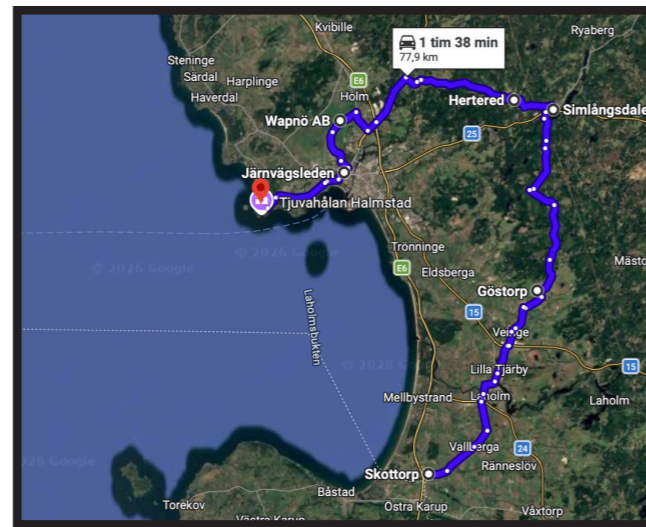
Southern route, part 1.



This route is 190 km and will take 4 hours to drive without stopping. It will be difficult to combine with lunch at Wapnö Slott, so recommended to drive on the Friday or Sunday. From Halmstad to Laholm is just transport but then followed by coastal roads to Båstad and Torekov. On the return leg we'll use the old and beautiful road across

<https://maps.app.goo.gl/qs1FHRcXm3eDFRC88>

Southern route, part 2.



Hallandsåsen and then through woodlands in Halland.

Suggested stops along the road:

Båstad and/or Torekov harbour,
A stroll amongst the old houses,
There are plenty of cafés and places to eat

<https://maps.app.goo.gl/VBJvDyWzuY1dYMPRA>

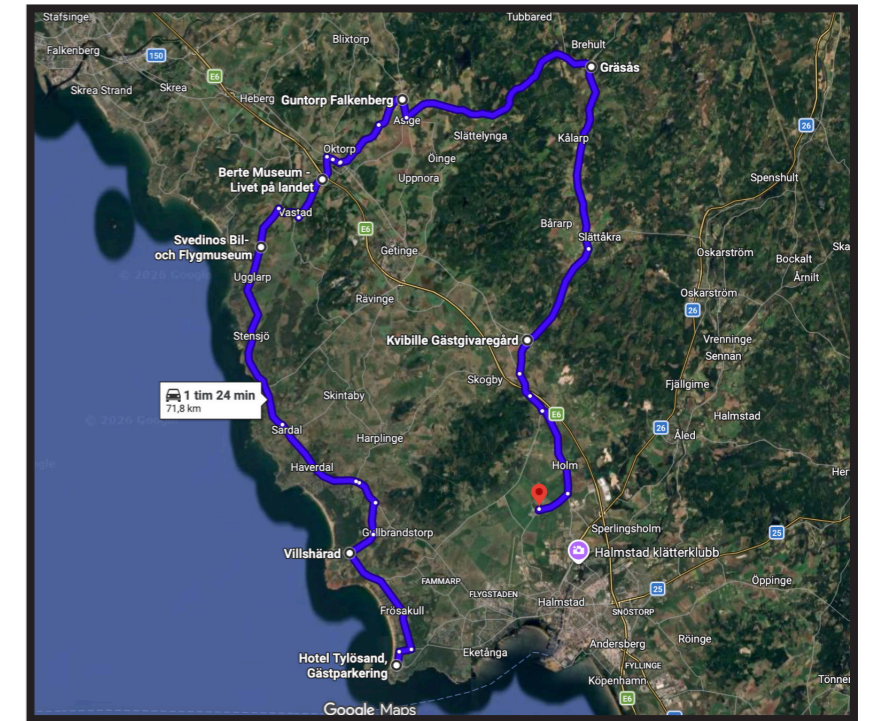
Northern route – long.

The route is 125 km and will take between 2.5 and 3 hours from Tylösand to Wapnö Slott where lunch will be served between 11.00 - 14.00 on Saturday. It follows the coast northwards before turning east to inland Halland with beautiful meandering roads.

Suggested stops along the road:

- Särðals kvarn (mill) café, 20 min from Tylösand
- Göstas Café, Steninge, 20 min from Tylösand
- Svedinos Automobile and Aviation Museum, Ugglarp, 30 min from Tylösand
- Toveks Carmuseum, Falkenberg (a fantastic collection of VW's), 60 min from Tylösand
- Feldts på Skolberget café and more, Oskarström, 120 min from Tylösand

<https://maps.app.goo.gl/SChqcYVPu9Kcp5sZ6>



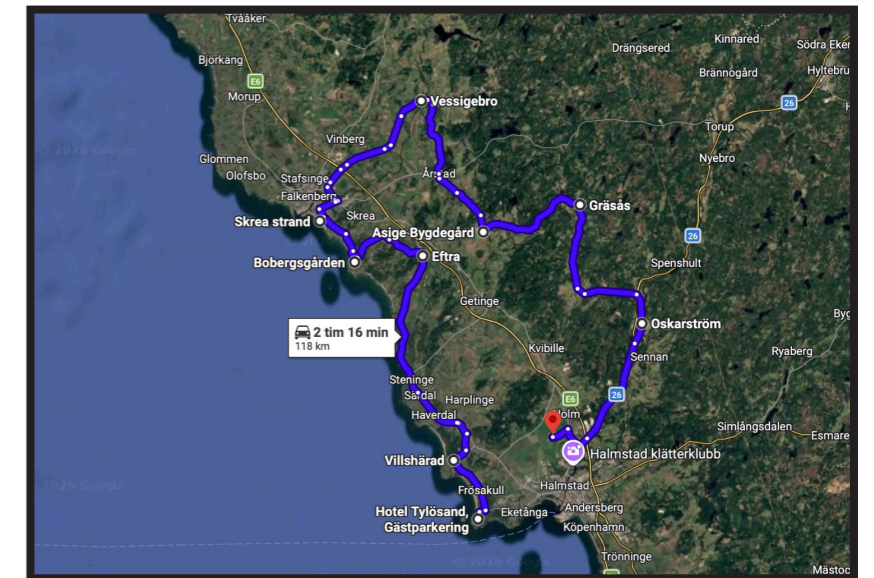
Northern route – short.

The route is 80 km and will take 1.5 hours from Tylösand to Wapnö Slott where lunch will be served between 11.00 - 14.00 on Saturday. Coastal, open landscape and woodland roads.

Tips på stopp utmed rundan

- Svedinos Automobile and Aviation Museum
- Berte Lantbruksmuseum, Slöinge (museum of agriculture)
- SIA Glass glasscafé, Slöinge (Ice cream factory outlet)
- Kvibille ostbod, Kvibille Gästgiveri (Cheese dairy outlet)

<https://maps.app.goo.gl/Stod4pTGUDMjnAqY8>



Elk (moose) safari Smålandet, Markaryd.

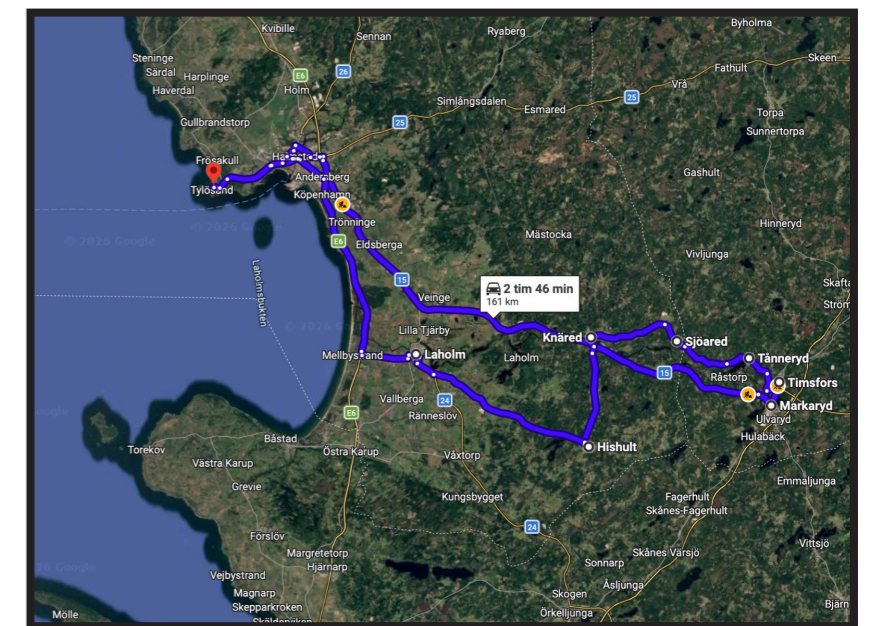
Drive to Markaryd, 70 km southeast of Halmstad which will take about 1 hour 10 minutes. The route back follows some wonderful roads through the woodlands of Småland (the county east of Halland).

The safari park opened in June 2004 with the aim of offering the general public an opportunity to get close to the king of the forest and get a better understanding of the big animals without disturbing their natural behaviour.

The elk park offers a 3 km long meandering path through the forest where the elk wander freely. In the northern part the safari path enters the Bison valley, where a herd of American Bison live. Drive in your own car or ride on the park's safari train.

In the restaurant you can enjoy a fresh waffle, taste meat from elk or bison. There is also a giftshop to visit.

<https://maps.app.goo.gl/HFAS6euKoU9a9ffc8>

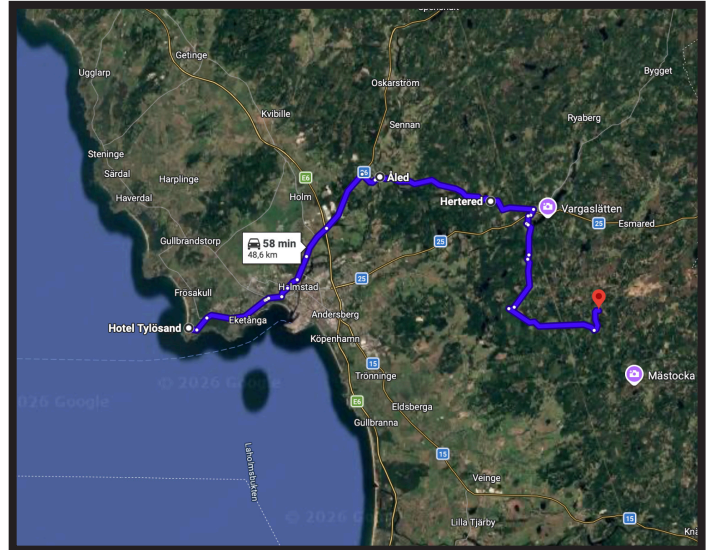


Ulvereds Hjorthägn.

Drive to Ulvered and the deer enclosure. It is about 50 km southeast of Halmstad. Find your own route back.

Ulvereds deer enclosure is a place to visit both for a tasting experience of the game restaurant as well as the wonderful nature with the beautiful animals. Just as the name reveals, the enclosure is packed with deer and mouflon sheep who inquisitively move around just outside our restaurant window. Within the enclosure is also a fantastic area for fishing for rainbow trout.

<https://maps.app.goo.gl/uvCGSUjwWtXhvjQT9>



Welcome to our 60th anniversary and the weekend's program.

FRIDAY: Check-in opens at 15.00. British Auto, the Morgan dealer for Sweden and Norway, and others will set up shop in the grounds of the hotel. Mechanics will also be present offering advice and assist with small jobs. In the evening we will have a **Beach Party**, with good food and happy music by the duo Blomqvist & Lindstrand featuring DJ Aurora!

SATURDAY: Breakfast will be served between 7.00 -10.00. Our Programme & Road Book contains separate runs which are excellent for exploring the local area. Two of them will meet at the beautiful Wapnö farm estate where a drop in lunch awaits between 12.00 – 14.00.

On return to Hotel Tylösand, our traders will be back for the afternoon offering new Morgans, clothes, tools and minor servicing. Voting for the People's Choice competition for the loveliest Morgan will also take place here.

We'll meet at 18.00 for a welcome drink followed by the

Anniversary party at 19.00. As MOG was founded in 1966 the theme for the evening will be **The Sixties**.

Interpret this as you like; Carnaby Street, Mods, Woodstock, Hippie, Beatles, Rolling Stones, Malvern or maybe Flower Power! The most important thing is to laugh, reminisce and have a fun evening together in honour of



MOG's 60th Anniversary. The duo Blomqvist & Lindstrand featuring DJ Aurora will play 60's music which will get us rocking one more night!

SUNDAY: Breakfast will be served between 7.00 – 10.00. Followed by 2026 AGM for MOG's members.



Hotel Tylösand, Halmstad, Sweden
22-24 maj 2026

For further information please contact:
The event: kage@schildts.se The hotel: info@tylosand.se